

SmartNetSuite is an advance package of solutions of **monitoring, cybersecurity** and **analytics** that facilitates a secure and encrypted access to your cellular routers network and monitors the stats of your devices at all times.

- ❖ Uninterrupted visualization of the devices status.
- ❖ Advance security for IoT and Industry 4.0
- ❖ BigData and Analytics under demand



Secure



Easy to use



Scalable



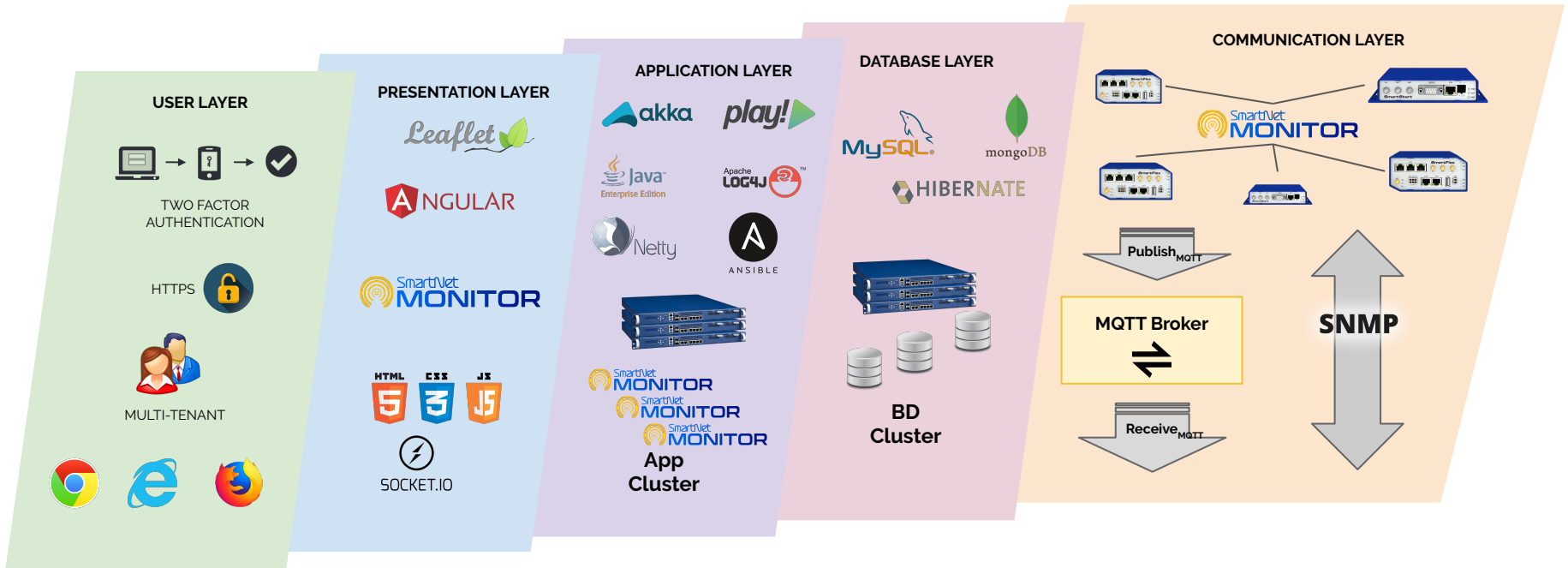
SmartNetMonitor monitors and control the entire cellular routers network.

Features:

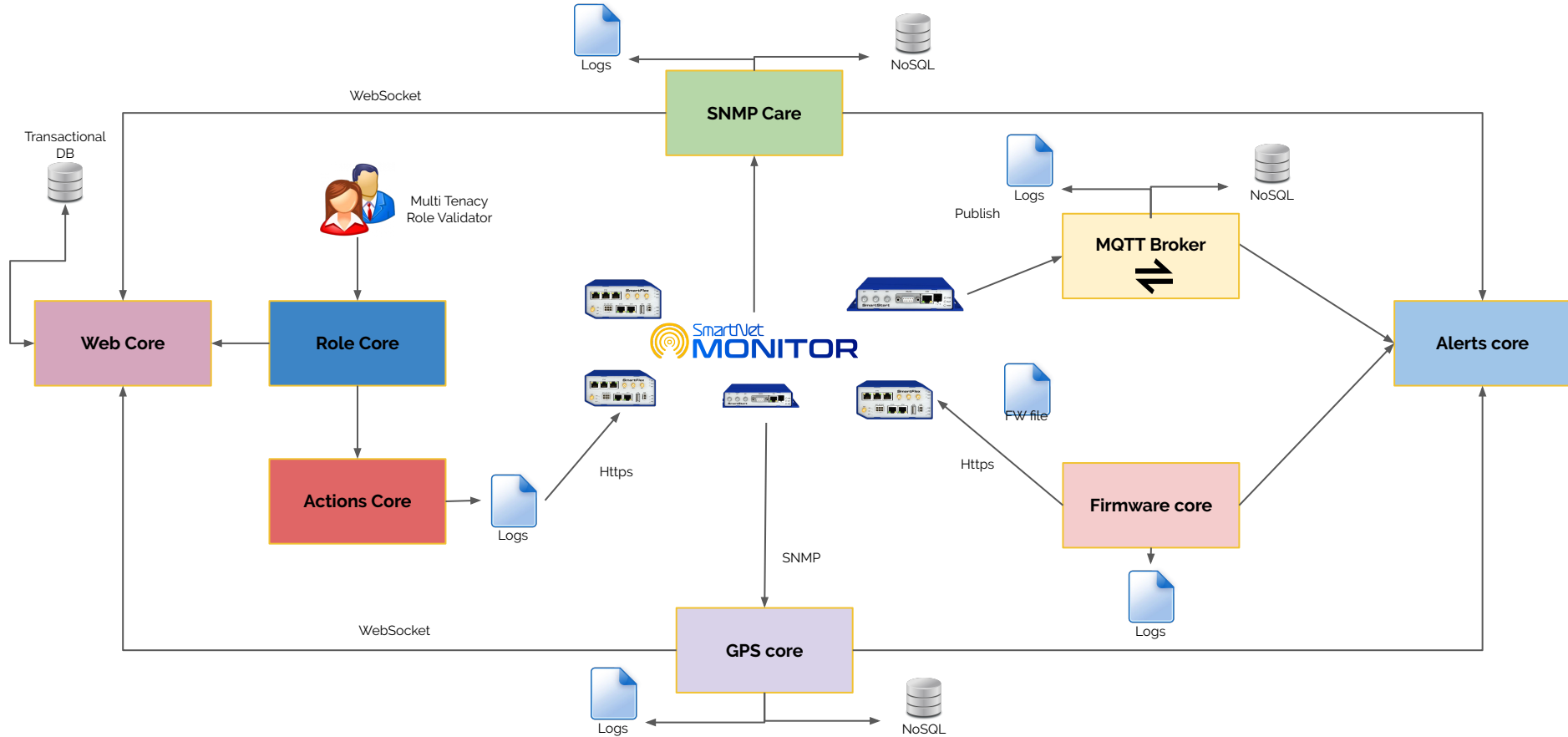
- Visualization of Status: Signal, Latency, Power supply, Temp. SN, IMEI, etc
- Location via: manually, GPS and BTS info (coming)
- Alarming: low voltage, signal lost, etc
- Digital I/O actions
- Statistics from stored data
- FW update
- Download router configuration file
- Change passwords
- Etc.



Cloud & On-premise



Architecture

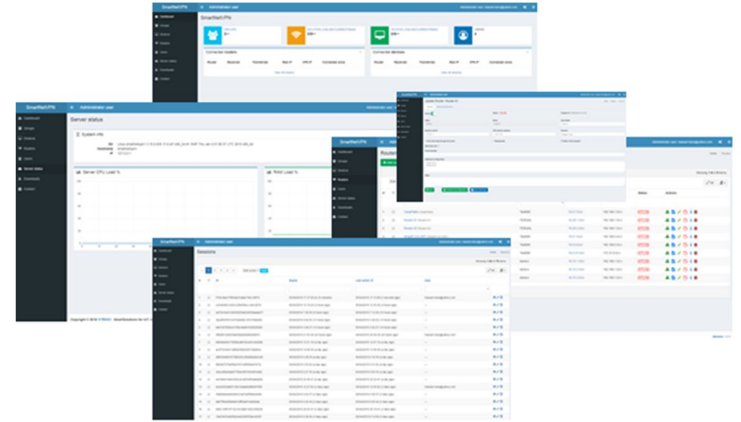


SmartNetVPN your first line of defense is your own Private Network.

- No need for Static IPs
- No need of Dynamic DNS services (DynDNS)
- 24 hour connection. Autoreconnect
- 4G and ADSL/Fiber/Satellite
- Compatible with all operators worldwide
- Easy Admin Web Menu
- All OS: Windows, Linux, MAC, Smartphone (iOS&Android)

Features:

- Supported vendors: Advantech, RedLion
- Security:
 - 2nd-Fact Auth. (Google App)
 - Invalid login Register
 - 1-time URL for send via email and download certificates



SmartNetVPN
Windows Client





OpenSSL



Bootstrap

Architecture

