



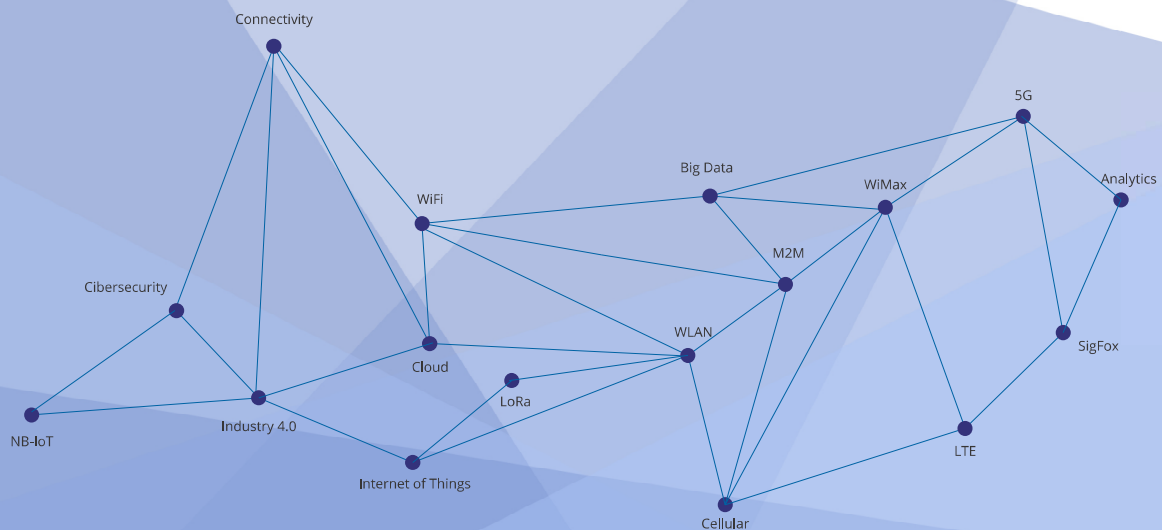
SmartNet SUITE

Monitoring and VPN Platform



SmartNet
MONITOR

SmartNet
VPN



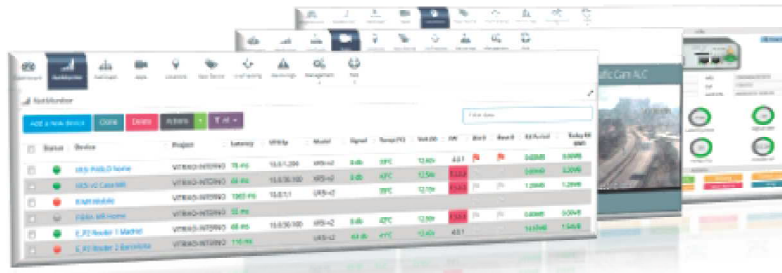
teralco
GROUP

Compatible with:





Monitor & Control for your Cellular Network



Get an immediate **OVERVIEW** of your devices

SmartNetMonitor is a web platform created to centralise the supervision and control of your cellular routers. A **single, robust and secure environment**, designed to be the **control room** for any IoT network.

Based on the latest web technologies, our platform allows users to have access to the routers configuration Web Menu, and visualize all statistical data. Fully compatible with VPN solutions like Digicluster, SmartCluster and our **SmartNetVPN**.



SmartNetMonitor is located on a high performance cloud center, and is always available from any device connected to the internet.

An installation on **Customer's Data Center (on premise)** is also possible.

Multitenant, Multiusers, Multiprojects. Ready to use, **secure and scalable**. If your network grows, SmartNetMonitor grows with you.

HIGHLIGHTS

Get Statistics

- Status: online/offline
- PLMN, cell, Channel
- PIN, PUK, phone number
- Temperature, Voltage
- Signal and Latency
- SIM Active
- SN, MAC, IMEI
- Location and GPS Tracker

Actions

- Update FW
- Upload / Download Config
- I/O Digital Activation
- Change Passwords

Security

- VPN - Compatible
- HttpS Access
- 2nd Factor Authentication

Get Alerts

- Router online / offline
- Power supply voltage
- Temperature thresholds
- Digital input value changes
- Poor signal
- FW version
- Property variations
- Other



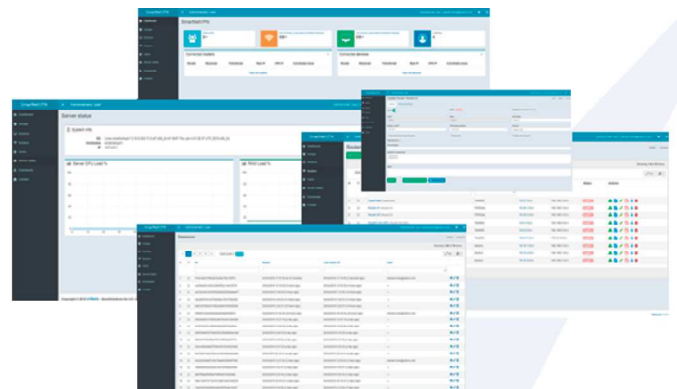
“The first line of defense: your own VPN”

A **Virtual Private Network** or **VPN** is the **first line of defence** that must be implemented in every network topology. Consisting of 3 methods: Authentication, Encryption and Integrity, this is the basic way to protect communications.

SmartNetVPN is a standardised solution with an easy-to-use environment but with a high complexity in the background that will allow any user to create a secure connection between routers, PCs, Server or Smartphones with just 1 click.

Advantages

- No need for Static IPs
- No need of Dynamic DNS services (DynDNS)
- 24 hour connection. Autoreconnect
- 4G and ADSL/Fiber/Satellite
- Compatible with all operators worldwide
- Easy Admin Web Menu
- Compatible with Windows, Linux, iOS and Android



Security

- Linux architecture
- HttpS and Dual-Factor authentication
- Cipher supported: AES-256, BF-128, etc.
- Device connection logs
- IP Source registration
- Continuous improvements
- Up to Date

MODELS AND SUPPORT

- Pay Per Use - CLOUD
- Customer´s Data Center (on premise)
- Mini Instance server

- Support and Maintenance available
- Continuous application and security updates
- Customization available



FULL SUPPORT PROGRAM

	BASIC (with your license)	STANDARD	GOLD	PLATINUM
NEW RELEASE NOTIFICATION	✓	✓	✓	✓
E-MAIL SUPPORT	1 MONTH	✓	✓	✓
CHAT SUPPORT	1 MONTH	✓	✓	✓
HW MONITORING	1 MONTH	✓	✓	✓
CORRECTIVE SUPPORT (BUGS)	1 MONTH	✓	✓	✓
REMOTE BACKUP		✓	✓	✓
PRIORITY E-MAIL			✓	✓
TELEPHONE SUPPORT			✓	✓
SECURITY UPDATES			✓	✓
APPLICATION UPDATES			✓	✓
24/7 REMOTE SUPPORT				✓
24/7 ONSITE SUPPORT				✓
FULL RECOVERY SUPPORT				✓

DESCRIPTION

NEW RELEASE NOTIFICATION

We keep you up to date on new software releases.

E-MAIL SUPPORT

Technician will answer your questions within 24hrs.

CHAT SUPPORT

Technician will answer via Chat with no guaranteed time response.

HW MONITORING

Monitoring of Server HW resources: RAM, CPU, Hard Disk, etc

CORRECTIVE SUPPORT (BUGS)

Corrective support in case of Bugs on the application.

REMOTE BACKUP

Monthly Remote Backup in our SFTP.

PRIORITY E-MAIL

Technician will answer your questions with priority response on 8x5 basis

TELEPHONE SUPPORT

Technician will support via Telephone on 8x5 basis.

SECURITY UPDATES

O.S. Updates & recommended CVE fixes.

APPLICATION UPDATES

New features and bugs fixes.

24/7 REMOTE SUPPORT

In critical situations, we will support you remotely 24/7 within 4 hrs response time.

24/7 ONSITE SUPPORT

In critical situations, we will support you onsite 24/7. (expenses not included!)

FULL RECOVERY SUPPORT

In critical situations, we will support you 24/7.



Head Office

Elche Parque Empresarial
C/ Severo Ochoa 46 2-1 edificio, 11
03203 Elche, Alicante

Tech Hubs

Madrid
C/Francisco Silvela, 42 - 1º ·
28028 Madrid

Parque Científico UMH
Avinguda de la Universitat d'Elx,
03202 Alicante



www.teralco.com
info@teralco.com

Compatible with:

